

**Hot water pellet boiler**  
**“ERATO Pelletherm 25 automatic”**  
**USER MANUAL**



<http://www.erato.bg>

Thank You for buying hot water pellet boiler „ERATO Pelletherm 25 automatic”. This manual will help You to use and maintain the unit properly.

According to Bulgarian government decree “MC № 187/21.09.2000” the unit should be treated as high risk equipment and the end-user should report it to the regional technical supervision register.

## **ATTENTION!**

**IN INTEREST OF YOUR PERSONAL SECURITY IT IS OBLIGATORY TO READ THOROUGHLY AND CAREFULLY THIS INSTRUCTION MANUAL BEFORE PROCEEDING WITH ANY ACTIONS WITH THE BOILER – MOUNTING, CONNECTING, ETC. IN CASE THAT REQUIREMENTS, DEPICTED IN THIS MANUAL ARE NOT SATISFIED, FAILURE OF THE UNIT COULD BE EXPECTED, OR EVEN FATAL CONSEQUENCES, FOR WHICH ERATO COMPANY DOES NOT TAKE RESPONSIBILITY.**

# Contents

page

<b>1. Hot water pellet boiler “ERATO Pelletherm 25 automatic” – description and advantages.</b>	<b>5</b>
<b>The unit could utilize following types of fuel:</b>	<b>5</b>
<b>The unit is equipped with:</b>	<b>5</b>
<b>The unit is supplied with :</b>	<b>5</b>
<b>2. “ERATO Pelletherm 25 automatic” hot water boiler technical data.</b>	<b>7</b>
<b>Table 1.</b> Thermal and technical data for hot water pellet boiler “ERATO Pelletherm 25 automatic”, using wood pellets.	<b>8</b>
<b>Table 2.</b> Dimensions and technical data for hot water pellet boiler “ERATO Pelletherm 25 automatic”	<b>9</b>
<b>Table 3.</b> Recommended solid fuel properties – wood pellets.	<b>10</b>
<b>Table 4.</b> Pellets classification, considering their physical properties (based on fuel proximate analysis) – according to fuel evaluation methods, developed and applied in ERATO company;	<b>10</b>
<b>3. Description of hot water pellet boiler “ERATO Pelletherm 25 automatic”.</b>	<b>11</b>
<b>4. Installation process.</b>	<b>13</b>
<b>5. Hot water boiler installation and starting procedures.</b>	<b>15</b>
<b>5.1. Basic fuel requirements.</b>	<b>15</b>
<b>5.2. Starting hot water pellet boiler “ERATO Pelletherm 25 automatic” procedure.</b>	<b>16</b>
<b>5.2.1. Interface control board of hot water pellet boiler “ERATO Pelletherm 25 automatic”</b>	<b>17</b>
<b>5.2.2. Hot water boiler power supply.</b>	<b>18</b>
<b>5.2.3. Hot water boiler very first start.</b>	<b>18</b>
<b>5.2.4. Main parameters for boiler operation.</b>	<b>19</b>
<b>5.2.5. Adjustment process of the boiler according to the thermal load of the building/consumer.</b>	<b>20</b>
<b>5.2.6. Changing the working parameters of the process control module.</b>	<b>22</b>
<b>5.2.7. Nominal operation mode of the boiler.</b>	<b>24</b>
<b>5.3. Adjustment of the thermal capacity of the boiler.</b>	<b>25</b>

5.3.1.	Decreasing the thermal capacity of the boiler :.....	26
5.3.2.	Increasing the thermal capacity of the boiler : .....	26
5.4.	Stopping the hot water boiler.....	26
5.5.	Turning OFF the boiler.....	27
•	Accidental boiler stop. ....	27
5.6.	Showing and teaching the end user about the maintenance and adjustment procedures.....	28
5.7.	Safety and unexpected risks .....	28
5.8.	Operation faults and their repairing .....	30
5.9.	Hot water boiler warranty form completion.....	33
5.10.	Actions, after the unit is not in exploitation anymore.....	33
QUALITY CERTIFICATE .....		34
WARRANTY FORM.....		35
WARRANTY CONDITIONS.....		36
WARRANTY SERVICE PROCEDURES LIST .....		37

## **1. Hot water pellet boiler “ERATO Pelletherm 25 automatic” – description, properties and advantages.**

**“ERATO Pelletherm 25 automatic”** is steel-plate hot water pellet boiler, which uses solid biomass fuel in shape of pellets. The boiler is designed to be connected to local hot-water heating systems, as well as heating up domestic hot water. The boiler uses wood pellets, as well as other type/shape of biomass, the resulting heat energy from thermo-chemical conversion (i.e. combustion process) is transmitted to the circulation water in its water jacket and the heat energy is transported to the heating system/consumer.

### **The unit could utilize following types of fuel:**

- Wood pellets, having diameter 6 and 8 mm, categorized in the range of: A, AB, B, BC, C, CD, E, EF (according to the methodology, developed for pellets properties estimation in ERATO company);
- Pre-dried nuts (cherries for example);
- Fuel mixture – pellets and nuts (for example mixture ratio could be 50% - 50%);
- Pellets, produced of any other solid biomass (for example olive husk residue);
- Other solid biomass based pellets, but confirmation for these fuels need testing and approval by ERATO company laboratory;

### **The unit is equipped with:**

- Steel plates welded heat exchanger for heating-up the circuit water;
- Flue gas fan;
- Fresh air supplying fan;
- Burner's ash removal mechanism – removes the ash residuum out of the burner's grate;
- Daily fuel hopper with capacity of about 135 kg;
- Programmable operating module, which controls the functions of the unit and is adjustable to the specific need of a heating system as well as the properties of the fuel;
- Ash residue container with capacity of approximately 6-8 kg;
- Manually driven lever for activation of the semi-automatic ash cleaning system (this system cleans the ash, deposited on the internal surface of the pipes of boiler's convective section);

### **The unit is supplied with :**

- Automatic fuel ignition system;
- Automatic burner's ash removal system;

- Semi-automatic cleaning system of the ash, deposited on the surfaces of the heat exchanger pipes;
- Automatic fuel feeding auger system;

### **Unit's advantages :**

- The hot water boiler is designed to utilize solid biomass fuel, making it environmentally friendly, CO<sub>2</sub> neutral and does not contribute to the global warming process – result of fossil fuel utilization;
- The specific price of the heat energy, delivered by solid biomass utilization is less dependent on the world fuel market trends and practically the heat energy price is competitive to the conventional energy sources;
- The boiler is automatic and the thermal comfort achieved is close to that, originating from fully automatic boilers, (for example liquid or gas fuel, as well as electric boiler), which makes it applicable in heating systems, equipped with programmable room thermostat;
- The unit is equipped with automatic fuel ignition system and another one for burner's ash cleaning;
- Automatic unit operation. Hot water boiler could be connected to programmable room thermostat (weekly programmable), which guarantees maximal thermal comfort and economical fuel consumption;
- The unit utilizes solid biomass fuel, in shape of pellets (wood pellets), dried nuts (cherry nuts for example), which have ash contents higher than the limits, defined in following norms : ONORM M7135, DIN 51731 и DINPlus;
- High efficiency;
- Low pollutant contents in the flue gases;
- The unit is applicable for domestic hot water heating purposes;
- Automatic fuel feeding system, transported from the built-in “daily” hopper to the burner;
- The control operating module can operate the function of additional external fuel feeding system, which deliver fuel to the built-in fuel hopper from external one;
- Simplified maintenance and service procedures;
- Minimized running costs;

## **2. “ERATO Pelletherm 25 automatic” hot water boiler technical data.**

- Thermal and technical data for hot water pellet boiler “ERATO Pelletherm 25 automatic”, utilizing wood pellets are given in **Table 1**;
- Dimensions and technical data for hot water pellet boiler “ERATO Pelletherm 25 automatic” are given in **Table 2**;
- Recommended solid fuel properties – wood pellets, are given in **Table 3**;
- Pellets classification, considering their physical properties (based on fuel proximate analysis) are shown in **Table 4**;

<b>Parameter</b>	<b>Dimension</b>	<b>Value</b>
<i>Nominal thermal capacity</i>	<i>kW</i>	<i>25</i>
<i>Thermal capacity operation range</i>	<i>kW</i>	<i>15 – 25</i>
<i>Utilized solid fuel</i>	<ul style="list-style-type: none"> <li>• <i>Wood pellets;</i></li> <li>• <i>Pre-dried cherry nuts;</i></li> <li>• <i>Other dried nuts;</i></li> </ul>	
<i>Utilized pellets, complying ERATO classification methodology</i>	<i>A,AB,B,BC,C,CD,D,DE</i>	
<i>Wood pellets fuel consumption rate at nominal thermal capacity</i>	<i>kg/h</i>	<i>6</i>
<i>Fresh air flow rate, required for effective combustion process and boiler operation</i>	<i>kg/h</i>	<i>45 - 50</i>
	<i>m<sup>3</sup>/h</i>	<i>40 -45</i>
<i>Averaged wood pellets consumption rate (the unit is operating in a popular heating system)</i>	<i>kg/h</i>	<i>4</i>
<i>Thermal effectiveness at nominal capacity</i>	<i>%</i>	<i>89</i>
<i>Air excess ratio</i>	<i>λ</i>	<i>1.6 – 1.8</i>
<i>Flue gases temperature at nominal thermal capacity</i>	<i>°C</i>	<i>155 – 165</i>
<i>Solid fuel residue</i>	<i>ash</i>	<i>The quantity depends on the ash contents in the raw fuel, as well as operating conditions</i>

**Table 1.** Thermal and technical data for hot water pellet boiler “ERATO Pelletherm 25 automatic”, utilizing wood pellets.



Parameter		Dimension	Value
<i>Weight</i>		<i>kg</i>	<i>405</i>
<i>Water jacket capacity</i>		<i>dm<sup>3</sup></i>	<i>120</i>
<i>Exhaust gases duct diameter</i>		<i>mm</i>	<i>150</i>
<i>Fuel hopper capacity</i>		<i>dm<sup>3</sup></i>	<i>200</i>
		<i>kg</i>	<i>135 kg wood pellets</i>
<i>Overall dimension of the unit (WxDxH)</i>		<i>mm</i>	<i>1350x920x1450</i>
<i>Class (according to EN 303-5)</i>		<i>-</i>	<i>3</i>
<i>Operating overpressure of the circulating water</i>		<i>MPa</i>	<i>0.15</i>
<i>Heating system expansion vessel type</i>		<i>-</i>	<i>Opened</i>
<i>Factory tested overpressure</i>		<i>MPa</i>	<i>0.4</i>
<i>Recommended circulating water temperature</i>		<i>°C</i>	<i>80</i>
<i>Minimal recommended return water temperature</i>		<i>°C</i>	<i>60</i>
<i>Draught</i>		<i>hPa</i>	<i>0.1 - 0.2</i>
<i>Connections</i>	<i>Supply/return flow</i>	<i>G</i>	<i>1½"</i>
	<i>Drainage</i>	<i>G</i>	<i>½"</i>
	<i>Flue gases duct</i>	<i>mm</i>	<i>150</i>
<i>Power supply</i>		<i>-</i>	<i>1PEN ; 50Hz; 230V;</i>
<i>Electrical capacity</i>		<i>VA</i>	<i>120 + 1600 (at ignition process)</i>
<i>Electric protection</i>		<i>-</i>	<i>IP20</i>

**Table 2.** Dimensions and technical data for hot water pellet boiler “ERATO Pelletherm 25 automatic”.

Parameter	Dimension	Value
<i>Pellet's characteristic size</i>	<i>mm</i>	<i>6 – 12</i>
<i>Recommended fuel net calorific value</i>	<i>MJ/kg</i>	<i>&gt;17.2</i>
	<i>kWh/kg</i>	<i>&gt;4.7</i>
<i>Wood pellets category</i>	A, AB, B, BC, C, CD, E, EF	
<i>Ash content</i>	<i>%</i>	<i>See Table 4.</i>
<i>Moisture content</i>	<i>%</i>	<i>Max. 8 – 10%</i>

**Table 3.** Recommended solid fuel properties – wood pellets.

Pellet's category	$A^d$	DU
<b>A</b>	$A^d \leq 0.6\%$	$DU \geq 97.0\%$
<b>AB</b>	$A^d \leq 0.6\%$	$DU < 97.0\%$
<b>B</b>	$0.6 < A^d \leq 1.0\%$	$DU \geq 97.0\%$
<b>BC</b>	$0.6 < A^d \leq 1.0\%$	$DU < 97.0\%$
<b>C</b>	$1.0\% < A^d \leq 2.0\%$	$DU \geq 97.0\%$
<b>CD</b>	$1.0\% < A^d \leq 2.0\%$	$DU < 97.0\%$
<b>D</b>	$2.0\% < A^d \leq 3.0\%$	$DU \geq 97.0\%$
<b>DE</b>	$2.0\% < A^d \leq 3.0\%$	$DU < 97.0\%$
<b>E</b>	$A^d > 3.0\%$	$DU \geq 97.0\%$
<b>EF</b>	$A^d > 3.0\%$	$DU < 97.0\%$

**Table 4.** Pellets classification, considering their physical properties (based on fuel proximate analysis) – according to fuel evaluation methods, developed and applied in ERATO company;

**where :**

$A^d$  – ash contents, dry basis, [%];

DU – mechanical durability, [%];

### 3. Description of hot water pellet boiler “ERATO Pelletherm 25 automatic”.

The heat exchanger of the boiler complies with the acting requirements for such kind of units, defined in operating norm : *EN 303-5/2000 – „Heating boilers for solid fuels, hand and automatically fired, nominal heat output up to 300 kW. Terminology, requirements, testing and marking”*.

The unit consists of:

- Main part of the unit is **heat exchanger**. In the combustion chamber of this exchanger is mounted specialized grate burner, designed for horizontal fuel feeding;
- **The heat exchanger** is welded construction of carbon steel plates and steel pipes. The lower part of the exchanger is designed as combustion chamber. The burner is mounted in this chamber, as well as lining for efficient combustion process;
- **Linings**, mounted in the combustion chamber, providing high intensive and efficient combustion process;
- **Stainless steel burner**, mounted in the combustion chamber of the heat exchanger;
- **Ash container**, positioned in the lower part of the combustion chamber, below the burner;
- **Fuel hopper** is mounted aside of the boiler's heat exchanger. Beneath the hopper is mounted a fuel-auger separator (which also acts as fuel proportioner), followed by horizontal transport auger. The fuel proportioner prevent the so called “back fire” process, i.e. ignition of the fuel in the hopper by the hot flue gases in the auger duct in case of abnormal situations;
- **Fresh air fan** is mounted on the air duct of the burner. The fan is equipped with position adjustable flap in order to set the air flow rate;
- **Inflow and outflow connections (to/from the heating system)** of the supply and return circulating water are internal thread, diameter G1½”, positioned in the rear side of the heat exchanger;
- **Draining connection** is internal thread, diameter G½” and is positioned on the lower part of rear side of the heat exchanger. An appropriate drainage valve should be connected;

- **Flue gases exit duct** (external diameter  $\Phi 150$  mm) is positioned in the upper rear side of the heat exchanger (after the flue gases fan, concerning the flue gases track), utilized for forced flue gases extraction;
- **Boiler's heat exchanger** is covered with decorative covers, isolated with mineral wool plates. The front side of the heat exchanger is equipped with decorative door as well;
- **Outer decorative covers** are carbon steel plates color painted details;

## 4. Installation process.

### Norms and recommendations.

#### Basic requirements for installation of hot water pellet boiler “ERATO Pelletherm 25 automatic”:

- The room, dedicated to mount the boiler, should be supplied with fresh air supply duct, necessary for optimal combustion process as well as room ventilation;
- Installation of the unit in inhabitable premises, including dwelling corridors, is not allowed;
- The hot water boiler should be connected to the heating system by authorized personal only;
- Installation and service procedures of solid fuel hot water boilers should be performed by authorized qualified and certified personal ONLY;
- The hot water pellet boiler “ERATO Pelletherm 25 automatic” should be connected ONLY to heating system, supplied with **OPENED** expansion vessel;
- Both the entire heating system and the boiler should be totally filled with circulating fluid (water) and air-free before operating the boiler;
- Maintenance procedures of the boiler should be performed by trained adult persons, which have read the user manual of the unit;

#### Installation procedure of the boiler requires engineering project for the heating system, prepared according to the acting local norms and recommendations as follows:

- To the heating system - EN 303-5/2000 - „*Heating boilers. Part 5 : Heating boilers for solid fuels, hand and automatically fired, nominal heat output of up to 300 kW. Terminology, requirements, testing and marking*”;
- To the chimney;
- Fire prevention requirements;
- To the power circuit - EN 60335-1/1997- “*Household and similar electrical appliances – safety, Part 1 – General requirements*”;

- Appliance positioning in order to achieve comfortable maintenance.
  - Minimal distance of 1000mm in front of the unit and any wall should be provided;
  - Minimal distance of 400mm from the rear wall of the unit and any wall should be provided;
  - Minimal distance of 500mm from the right hand side of the unit and any wall should be provided, in order to guarantee easy access to the fuel transporting auger;
  - Minimal distance of 300mm from the left hand side of the unit and any wall should be provided, in order to guarantee easy access to the semi-automatic cleaning system lever;
  - Minimal distance of 500mm above of the unit and any wall should be provided, in order to guarantee easy access to the fuel's hopper, as well as enough room for cleaning purposes of the heat exchanger body;
- The hot water boiler should be positioned in the boiler's room according to the requirements for attaching electrical appliances to the power circuit – the unit should be positioned in a way, that will provide easy access to the power supply plug (230V/50Hz);

**Attention :** *the installation process of the boiler is finalized by performing so called “hot tests” procedure of the heating installation and the warranty card is filled with the required information.*

## 5. Hot water boiler installation and starting procedures.

**Attention :** The unit should be installed, adjusted and verified ONLY by trained staff, authorized by ERATO company.

### 5.1. Basic fuel requirements.

- The fuel, pellet shaped, should be dry. The unit producer recommends that the fuel should be stored in dry and well ventilated rooms;
- It is strongly forbidden to store the fuel in close region of the boiler, the minimal safety distance between the fuel and the appliance is 400 mm;
- The unit producer recommends an optimal distance between the boiler and the fuel container to be at least 1000mm. It is recommended the storage of fuel in room, next to that, where the boiler is installed;
- At the installation procedure of the unit, as well as the fuel storage one, fire prevention recommendation should be considered. It is also recommended to install a fire-extinguisher in a safe and easy accessible place;

In principle heating systems, which are hydraulically opened to the atmosphere allow direct contact between the circulating fluid (in most cases it is water) and the air. During the heating season the water content in the expansion vessel absorbs oxygen from the atmosphere through the free surface. The increased oxygen content in the water threatens the metal of the unit, as well the pipes. Through the free surface of the expansion vessel water evaporation is observed as well. Considering these, appropriate water should be added through the expansion vessel – it must cover the requirements of norm BDS 15207-81.

During the heating season regular checking of circulating water level in the expansion vessel should be performed by the end user. The water content in the circulating system should be kept constant. If additional water is required, then precautions should be taken, not to add air in the heating system as well. The water, utilized for filling purposes of the heating system should be decontaminated and air-free, and is not dedicated for any other purposes, but as a circulating fluid only. Any heating system drainage is inadmissible, except when repairing modules/sections of the system. Practical experience shows that water level checkup should be performed regularly in a period of 14 days in order to sustain quasi-constant water content.

In case that additional water is required, the filling process should be performed carefully, when the hot water boiler is cooled to the ambient temperature. These precautions are induced due to prevent rising of thermal stress of the steel boiler's body and its damage (leakage).

In case that the boiler as well as the heating installation will not be in exploitation for a long period, then in order to prevent local water freezing and damages, it is advisable to perform total drainage of the circulating water. Please take into account that the presence of liquid in the heating system, as well in the boiler will prevent oxidation process of the metal surfaces, corrosion and system failures.

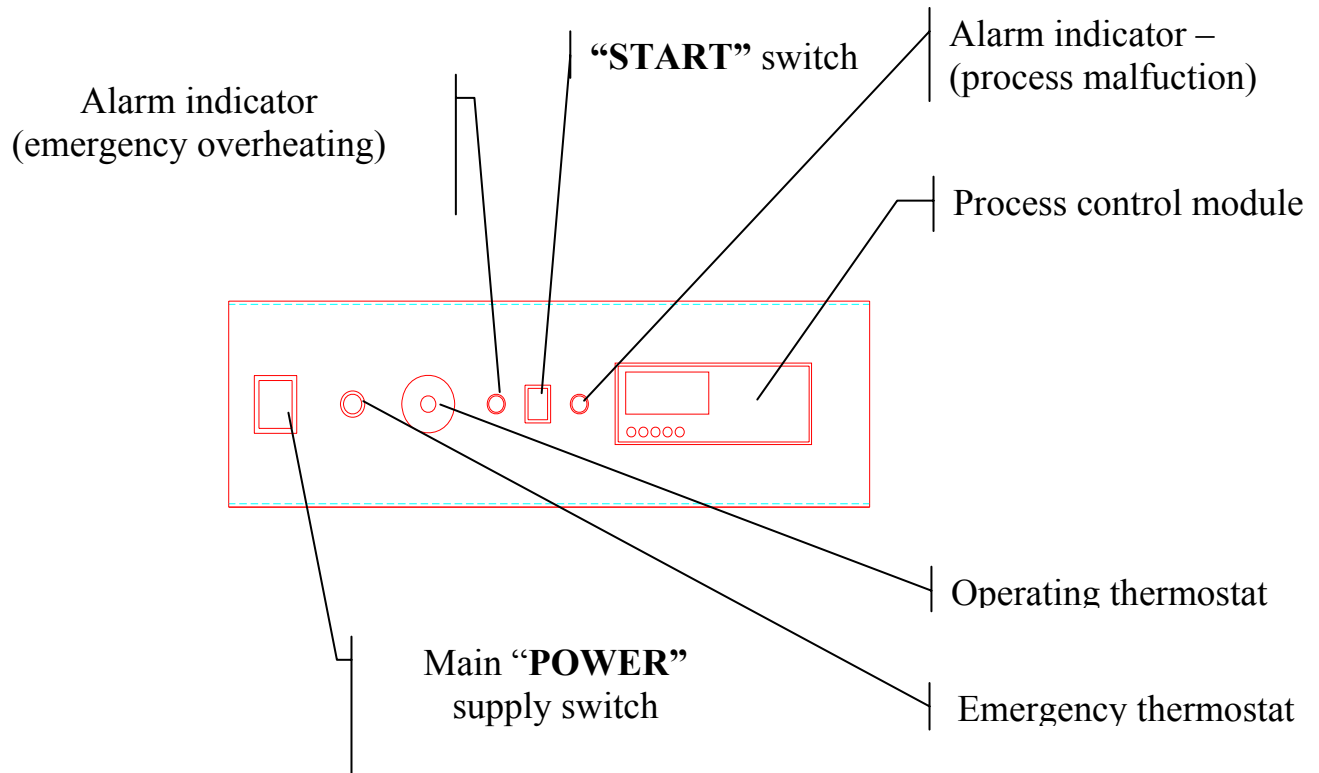
## **5.2. Starting hot water pellet boiler “ERATO Pelletherm 25 automatic” procedure.**

### **Basic requirements :**

- Any maintenance procedures should be performed in accordance with the described in this manual;
- Any intervention in the working process of the unit, which could lead to unit's failure and/or dangerous and health threatening situations, are strongly prohibited;
- The unit should be checked by the maintenance staff or any trained personal regularly;
- The end-user should not perform any interventions, repairs, etc. of the unit. In case that warning and failures arise, check the failures table (applied at the end of this manual) and call the service support if the case is not described there;
- Any adjustments of thermal capacity higher than the nominal thermal load of the units are not allowed;
- The ash, deposited in the combustion chamber of the boiler, should be collected in fireproof containers and cooled down to ambient temperature. The cooled ash should be disposed in appropriate waste containers. Please take into account that the mineral ash, result of wood biomass pellets could be considered as soil fertilizer and dispersed for agricultural purposes for example;



### 5.2.1. Interface control board of hot water pellet boiler “ERATO Pelletherm 25 automatic”



**Figure 1.** Interface control board, equipped with control and operating devices of hot water pellet boiler “ERATO Pelletherm 25 automatic”.

#### Interface control board devices description:

- Main “POWER” switch – switches ON and OFF the main power supply of the boiler;
- Operating thermostat – assigns the set-point of circulating water in the boiler. The boiler will run until this set-point is reached and will supply heat energy to the heating system;
- Emergency thermostat – protects the boiler from exceeding emergency temperature level and boiler overheating. This thermostat is factory preset to switch off the unit at water temperature in the boiler above 95°C;
- “START” switch – sends “START/STOP” signal to the process control module, which controls the operation of the boiler;
- Process control module – a programmable unit, that controls the functions of unit according to predefined program (firmware);

- Alarm indicator (process malfunction) – *indicates any abnormal state of the boiler, for details check the information, written on the process control module's display;*
- Alarm indicator – emergency overheating – *indicates emergency overheating state of the boiler, due to activation of the emergency thermostat of the boiler. In case of activation, cool down the unit and check and repair the reason for the emergency situation, finally reset the emergency thermostat;*

### **5.2.2. Hot water boiler power supply.**

- The unit should be connected to the main power supply, according to the safety rules and appropriate norms;
- The hopper should be filled with pellets, in order transport material by the pellet feeding auger to the burner. It's recommended to set the pellet hopper lid closed, in order to preserve uncontrolled air penetration to the combustion chamber through this tract;

### **5.2.3. Hot water boiler very first start.**

The unit is switched on by the main "POWER" supply switch, placed on the control board. The unit gets activation signal by switching ON the "START" and goes into automatic operating mode – it goes through ignition mode if needed. If the "START" switch is OFF then the boiler goes into stand-by mode and waits until new command arise. In case of power supply break-down the boiler will go into the same state of the unit before the interruption.

**ATTENTION :** *During the operation of the boiler when the door of the combustion chamber is opened, it is possible to observe smoke leakage through the transport auger tract as well as hot air gun entrance zone. Because of these reasons the opening of that door is not recommended. The same processes could be observed at the transition periods – during spring and autumn seasons, when the chimney's draught is reduced due to high ambient temperature.*

### **COMMENT :**

- *At the period of fuel ignition by hot air gun is activated. The gun has specific noise at functioning and should be not treated as malfunctioning sound. The hot air gun will be deactivated when the flue gas temperature reaches certain level, sensed by flue gas thermostat, mounted on the exhaust duct of the boiler;*
- *During the very first starting period of the unit it takes time to fill the auger volume with fuel. According to the settings of the unit the first ignition may*

*fail. If this is the case, please restart the unit (by switching OFF and ON by the main POWER switch) and check the ignition process gain;*

- *The boiler is operating, controlled by predefined algorithm, loaded in the process control module. The program itself is protected against unauthorized intrusion by a password. The user can change some unlocked and unprotected parameters. The meaning of any available parameter should be clear before any intervention and changes, otherwise the operating results are hardly predictable and malfunction could be caused;*

#### **5.2.4. Main parameters for boiler operation.**

The following table contains parameters, which define boiler's heat capacity.

<b>Parameter</b>	<b>Comment</b>	<b>Recommended value</b>	<b>Dimension</b>
<b>T4</b>	<i>Pellet's feeding time – during this period pellets are feeded heat to the burner – determines the heat capacity of the unit;</i>	<i>14</i>	<i>seconds</i>
<b>T6</b>	<i>Pellet's not feeding time (fuel is not transported to the burner) - determines the heat capacity of the unit</i>	<i>20</i>	<i>seconds</i>

**Table 5.** Main parameters description, which define heat capacity of the unit.

**ATTENTION :** *The producer guarantees effective and reliable operation of the boiler ONLY when its running conditions are in its corresponding operating range. That's why if any parameter is changed, it's value should be checked and verified to lie in the appropriate limits. Special care should be taken to fulfill the following requirements: the ratio of the described periods **T4** and **T6** - (**T4/T6**) should be in the following range :  $\frac{8.4}{20} = 0.420 \leq \frac{T4}{T6} \leq \frac{14}{20} = 0.700$ , where  $\frac{8.4}{20} = 0.420$  determines **lower** level of thermal capacity of the unit, corresponding to about 15kW, while the ratio  $\frac{14}{20} = 0.700$  determines the **nominal** heat capacity of the boiler;*

#### **NOTES :**

- The choice of these parameters could be preceded as well as followed by other parameters, which are not described in the table above. These parameters are dedicated to be varied by authorized trained service personal and their variation by the end user is not recommended;

- The producer reserves the right to change the specification and/or the design/adjustment of the unit without prior notice;
- The table above contains factory default values for the parameters of the settings of the process control module, which lead to optimal unit adjustment;
- The described parameters : **T4** and **T6** are most frequently changed – they define the thermal capacity of the unit and its operating regime;
- The adjustment of appropriate thermal capacity of the units could be realized through field fuel mass flow rate measurement. The fuel is collected at the exit of the burner by switching the unit to normal operation mode for a measured period of time and thus the flow rate is calculated. The appropriate adjustment shall be done through fuel mass flow rate determination, considering the fuel net heating value as well as thermal efficiency of the boiler. Here an example of thermal capacity determination is given :
  - *Average fuel mass flow rate is determined (per hour)-  $m_{\text{pellets}}=6.0$  kg/h. The instant mass flow rate is calculated as follows : the average fuel mass flow rate value is divided by 3600 ( 1 hour = 3600 seconds) and the result is  $m'_{\text{pellets}} = 0.00167$  kg/s;*
  - *The net calorific value of the pellets is considered (given by the fuel producer, other source, etc.) –  $H_{\text{pellets}} = 17.2$  MJ/kg = 17200 kJ/kg;*
  - *The thermal efficiency is determined (stated by the producer) at nominal thermal capacity : -  $\eta_{\text{boiler}}=89\%=0.89$ ;*
  - *The thermal capacity of the boiler is calculated as follows -  $P_{\text{boiler}} = \eta_{\text{boiler}} * H_{\text{pellets}} * m'_{\text{pellets}} = 0.89 * 17200 * 0.00167 = 25.654$  kW;*
  - *Any other thermal capacity of the boiler is calculated, following the described procedure above – for example if the fuel has different calorific value or the required thermal capacity is lower, than the nominal one;*

*The producer reserves the right to make changes of the setting of the process control module without obligations to inform the clients for that process.*

#### **5.2.5. Adjustment process of the boiler according to the thermal load of the building/consumer.**

**It is recommended to make appropriate adjustments of the process control module parameters in order to obtain high efficiency and reliable performance of the boiler, considering the thermal load, that should be**

supplied by the boiler. The required heat capacity for heating purposes of a common house could be assumed to be a linear function of the **temperature gradient**  $\Delta T$  (the difference between the mean value of temperature level in the heated rooms and the ambient temperature level). Thus the optimal operation process of the boiler requires regular adjustment of the “heat capacity” parameters of the unit.

**Explanation :** the data, shown in the following table are calculated on the assumption that the mean temperature level in the heat supplied rooms of the building is  $T_{\text{room}} = 20[^\circ\text{C}]$ . If any other value is the case, than refer the temperature gradient instead;

$T_{\text{ambient air}}$	$\Delta T$	Ratio $T4/T6$	$T4^*$	Heat capacity
$^\circ\text{C}$	$^\circ\text{C}$	-	seconds	kW
-15	35	0.7000	14.0	25.0
-10	30	0.6067	10.3	21.6
-5	25	0.5133	12.1	18.3
0	20	0.4200	8.4	15.0

**Table 6.** Appropriate adjustments of “heat capacity” parameters  $T4$  and  $T6$  according to the thermal load of the boiler;

where :

$T_{\text{room}}$  – mean value of the temperature in the heated rooms,  $[^\circ\text{C}]$ ;

$T_{\text{ambient air}}$  – mean value of the ambient temperature,  $[^\circ\text{C}]$ ;

$\Delta T = T_{\text{room}} - T_{\text{ambient air}}$  - temperature gradient,  $[^\circ\text{C}]$ ;

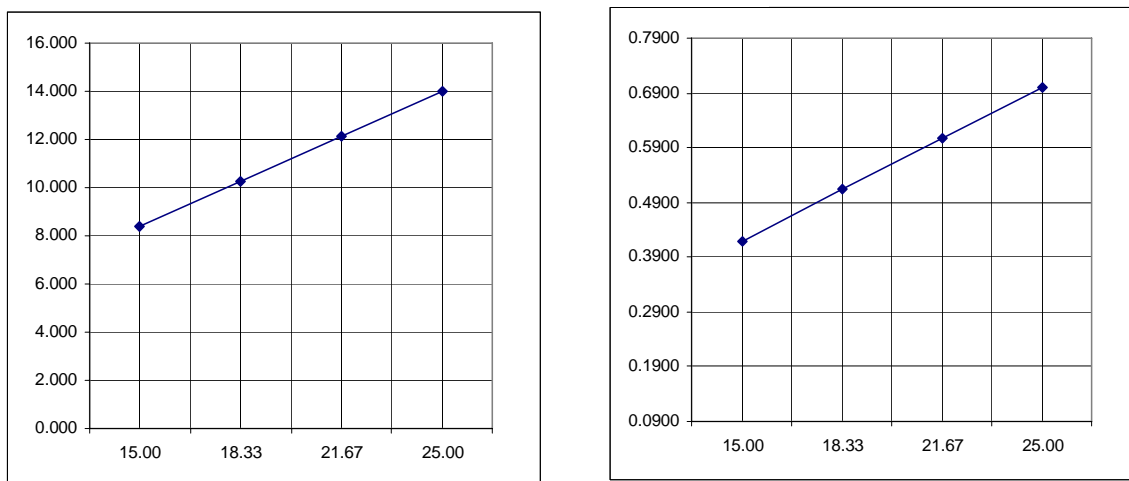
**\* The value of parameter  $T4$  is determined according to the assumption that value of parameter  $T6$  is conserved constant, i.e.  $T6=20$  seconds;**

**ATTENTION :** In case that the boiler is working for heating purposes of domestic hot water ONLY, than the heat capacity of the unit should be considered the  $T4/T6$  ratio limits -  $\frac{T4}{T6} = 0.420$ ;

**COMMENT :** *The above defined values of the “heat capacity” parameters are given for certain fuel – wood pellets with diameter  $d=8\text{mm}$ . In case that the fuel type or its characteristic size is different than  $8\text{mm}$  diameter wood pellets, than these values should be considered as basis for appropriate adjustment of the boiler.*

*Pellet's feeding  
time, [seconds]*

*Ratio T4/T6*



*Heat capacity of the boiler, [kW]*

**Figure 2.** Graphics of the T4 parameter and power ratio (*pellet's feeding time – T4 and ratio T4/T6*) values, according to the heat capacity of the boiler;

#### **5.2.6. Changing the working parameters of the process control module.**

##### ***Algorithm for changing the value of working parameters of the process control module of the boiler:***

The following text describes algorithm for changing the values of any parameter of the process control unit. **It's recommended to change these parameters only when it is necessary. The physical meaning of any parameter should be clarified, as well as the influence of a parameter on the performance of the boiler.** The visualized parameters are allowed to be changed:

1. Press the green button (●), marked **Menu/OK** on the interface panel of the process control unit. A menu list will be displayed;
2. Press buttons **arrow DOWN (▼)** or **UP (▲)** and choose the item **"PARAMETER"**;
3. Press button **arrow UP (▲)** until reaching the desired parameter – **T4 or T6**;

**NOTE:** Do not try to change any other parameter, unless the meaning and the influence on the performance of the unit is now known a priory;

4. Press button **arrow RIGHT (►)** and choose the field of the parameter value;
5. Press button **arrow DOWN (▼)** or **UP (▲)** and change the value of the parameter. **Note:** Holding the buttons pressed **arrow DOWN(▼)** or **UP (▲)** after certain period will increase the increment of the change of the parameter's value;
6. After the desired value is defined, press the green button **Menu/OK**;
7. The display of the process control module will show a question **"CONFIRM CHANGES?"**. Press buttons - **arrow DOWN (▼)** or **UP (▲)** until selecting the desired answer **"Yes"** or **"Not"**. Choose the answer **"Yes"** by pressing the green button **Menu/OK**, in order to confirm the change, or answer **"Not"** in order to reject the change of the value of operating parameter.

**IMPORTANT! :** If the user is not confident in the necessity of the change of the value of any parameter, or the value of a parameter is changed accidentally, then it's recommended to choose the answer **"Not"**.

8. Press the green button **Menu/OK** once more time and the process control module will exit the **"PARAMETER"** mode and will display the nominal operation process of the boiler control.

**NOTE:** If any accidental change of a parameter has been made at the exit of this process a summary question will be displayed **"CONFIRM CHANGES?"** – choose the answer **"NO"** and any changes will be canceled.

9. Following the algorithm described above, one can change any available parameter of the process control module and can vary the setting and the performance of the boiler.

#### **NOTES :**

- During the operating process of the boiler it is possible to arise an alarm situation (for example unsuccessful ignition process, fuel supply interruption, etc.). A short description of the alarm status is written on the display of the process control module. After removing the cause of the alarm situation, reset the operation module. The reset process of the unit is performed by switching OFF the main power supply switch and turning it back into ON position;
- At nominal operation process a manual ash residue removing process in the burner could be invoked by pressing the button **arrow LEFT (◄)**. This option is dedicated for testing the performance of the cleaning module **ONLY** and should **NOT** be activated unless testing the cleaning

mechanism is required. The automatic cleaning procedure is performed regularly in a predefined period of time (parameter T9 – *time period for automatic cleaning procedure*);

#### **5.2.7. Nominal operation mode of the boiler.**

After successful ignition of the fuel and when the operating temperature of circulating water is stable it could be assumed that the hot water heating boiler is in nominal thermal load. This mode should be utilized in order to make adjustments of the operating parameters of the unit. The parameters, described in Table 5 will define the thermal load of the boiler. After setting the values of operating parameters of the units, please check the position of the air flow rate adjustment flap of the air fan. The air flow rate is crucial for optimal operation and high efficiency combustion process, organized in the combustion chamber of the boiler.

The nominal thermal load of the units should be utilized in order to perform the so called “hot test” – check the entire heating system according to the acting norms for an operating heating system (for example check for any circulating water leakages).

#### **NOTES :**

- During the nominal thermal load of the boiler regular cleaning process is activated and the ash residue remained on the grate of the burner is removed away and is deposited in the ash container, positioned on the bottom of the combustion chamber. It should be noted that before the ash removal process, the fuel delivery to the burner is paused, while the air fan is working, thus ensuring conditions for utilization of the char, remained on the grate of the burner. A decrease of the thermal capacity of the boiler could be noticed however. **Comment :** *the period of ash removal of the grate plate of the burner is defined by the value of parameter T9, which is not described in Table 5. During the automatic ash cleaning interval a temporal decrease of the thermal capacity of the boiler is observed;*
- If a circulating pump is installed in order to transport the heat energy of the boiler to the consumers, it is recommended to control the inflow temperature to the boiler to be above 60°C. In case of low inflow temperature level, condensation of water vapor could be observed on the internal heat exchanging surfaces (please consider that water vapor is one of the final products of the combustion process and always persist in the flue gases of the boiler);



- It is not recommended to operate the hot water boiler at thermal capacity lower than 60% of its nominal thermal load, as such regimes are not optimal and thus have low efficiency of the unit;
- In case that continuous operation in low thermal load regimes are required, then it is recommended to connect heat accumulator to the heating system, which will ensure high efficiency, economical and reliable operation of the boiler itself, and the entire heating system in general;
- During the very first time of operation the boiler it is possible to observe water vapor condensation on the heat exchanging surfaces of the unit. Practically this is one-time process and will not affect the performance of the unit, neither any problems will arise as well;

**ATTENTION :** *The air flow rate is crucial for optimal operation of the combustion process, organized in the burner and the boiler overall operation effectiveness – when the air flow rate is less than the optimal one, then this insufficiency will result in incomplete combustion of the fuel, as the supplied oxygen is less than required. When the air flow rate is higher than optimal the result will be unsatisfying as well, because the excessive air will lead to low temperatures in volume for controlled combustion and will result in incomplete combustion of the fuel's volatile gases, released by the combustion process.*

*That's why it is recommended to use specialized device – gas-analyzer in order to adjust the operating parameters of the control module and to optimize the boiler's performance, thus achieving high efficiency and economical operation of the unit.*

### **5.3. Adjustment of the thermal capacity of the boiler.**

The adjustment of the thermal capacity of the boiler is performed by simultaneous adjustment of the fuel flow rate and the air flow rate, supplied by a fan to the burner.

The adjustment of the fuel flow rate is controlled by so called “thermal capacity” parameters (**T4** – *pellet's feeding time at nominal thermal capacity* and **T6** – *pellet's combustion period, i.e. period of time, when fuel is not fed to the burner*), which will determine the thermal capacity of the boiler.

**ATTENTION :** *In case of change of the fuel type (for example changing the pellets category) it should be followed by adjustment of the thermal capacity parameters and the operating mode of the boiler.*

#### **5.3.1. Decreasing the thermal capacity of the boiler:**

It is realized by decreasing the value of parameter **T4**, which will result in decreasing the fuel flow rate (fuel consumption). The same result (decreasing the thermal capacity) is achieved by increasing the value of parameter **T6**. The air flow rate should be decreased proportionally;

#### **5.3.2. Increasing the thermal capacity of the boiler:**

It is realized by increasing the value of parameter **T4**, which will result in increasing the fuel flow rate (fuel consumption). The same result (increasing the thermal capacity) is achieved by decreasing the value of parameter **T6**. The air flow rate should be increased proportionally;

**Comment :** *In case of changing the thermal capacity of the boiler it is recommended to adjust the air flow rate as well, by adjusting the position of plate, controlling the air flow rate. Decreasing the air flow rate is performed by closing the flap, mounted at the entrance of the air fan, respectively – the increase of the air flow rate is realized by opening that flap;*

#### **ATTENTION :**

- *Adjustment of the “thermal capacity” parameters should be performed by trained personal/end user, in order to achieve high efficient combustion process and optimal utilization of the fuel energy. It is recommended to adjust the boiler by authorized personal using gas-analyzer;*
- *In case of change of “heat capacity” parameters (T4 and T6), it should be determined the ratio  $T4/T6$  in order to verify that this ratio is in the range of the limits, described in Table 6. In case that the ratio  $T4/T6$  exceeds the operating interval, one of the parameters (T4 or T6) should be changed in order to comply the requirements and the ratio is in the operating range.*

#### **5.4. Stopping the hot water boiler.**

Stopping the operation of the boiler should be performed by turning OFF the “START” switch, mounted on the interface panel of the unit. Respectively, the starting process will be invoked by turning “START” switch in ON position. In case that the boiler will not operate for a relatively short period of time, than it is recommended to clean the ash deposited on the easy accessed heating surfaces of the heat exchanger.

**ATTENTION :** *In case that the boiler will not operate for a long period of time, then the heat exchanger should be thoroughly cleaned from the deposited ash. The ash layer acts corrosively on the carbon steel surfaces, which will lead to a decrease of the lifetime of the boiler's main modules – heat exchanger, as well as the burner. It is obligatory to perform service procedures and preventive observations of the unit by trained service personal only as well as thorough cleaning at the end of the heating season. Completing these requirements will ensure long exploitation duration of the boiler and its high efficiency and reliability.*

### **5.5. Turning OFF the boiler.**

The hot water boiler is turned off by changing the “START” switch into OFF position - this is the recommended method for turning the boiler off. During the working process in OFF state, the control module of the boiler performs so called “controlled turning off procedure” in which the operating fans are working and certain operating boiler parameters are controlled. After the boiler has cooled down to ambient temperature, the boiler should be switched off by turning off the main “POWER” switch. It is recommended to clean the deposited ash thoroughly of the heat exchanging surfaces of the boiler.

- **Accidental boiler stop.**

In operating process of the boiler emergency situations could arise and the boiler will go into alarm/failure mode. Some situations are detected by the process control module and it will go into automatic preventive regimes in order to protect the boiler and the heating system. These regimes are operated by appropriate automatic preventive measures as well as the control module display shows a short informative text, describing the cause of the alarm state and the “alarm” lamp is indicating the state of the boiler. Please refer this text before taking any actions. After the cause of the alarm situation is clarified, take adequate actions for bringing back the boiler into normal operating conditions and restart the boiler by switching it OFF and back into ON state by turning the main “POWER” switch.

**ATTENTION :** *in case of emergency situation – boiler overheating, the emergency thermostat is activated, appropriate text is displayed as well as indicator lamp is lit. In this case the boiler should be cooled down and the reason for such excessive process should be investigated and preventive measures should be performed. The emergency thermostat should be manually reset by unscrewing its preventive cap and its stem should be pressed until the thermostat switches back on (a “click” sound is heard in this process), screw the cap back. After the boiler is checked and the cause for overheating is determined and repaired, restart the control operation*

*module by turning off the main “POWER” switch and then back on in order to operate the boiler in normal state.*

## **5.6. Showing and teaching the end user about the maintenance and adjustment procedures.**

It is necessary to show and teach the end user the maintenance procedures for operating the boiler efficiently and keep its reliability in high degree order. Also the installer should demonstrate and teach the end user how to change the operative parameters of the control module of the boiler in order to operate the unit in different modes and heat capacities, according to the local heat consumption:

- **Fuel hopper charging** – the fuel is poured out in the hopper of the boiler and the hopper’s cap should be closed in order to prevent uncontrolled air penetration to the burner through this section;
- **Ash cleaning procedure** – it is recommended to clean periodically the ash residue (at least once per day) the convective heat exchanger part of the unit by manually swinging the cleaning lever for semiautomatic ash cleaning process. Covering this requirement will ensure effective heat exchanging process and will sustain optimal operating conditions of the boiler. Detailed ash cleaning and maintenance procedures are described in ANNEX 1 of this manual;

*ATTENTION : regular cleaning of the ash residue, deposited on the heat exchanging surfaces of the boiler will ensure long-life reliable exploitation period, economic and efficient performance of the unit;*

## **5.7. Safety and unexpected risks**

Risks could arise at the exploitation of the boiler:

The hot water pellet boiler “ERATO Pelletherm 25 automatic” is designed according to the safety requirements of the operating European standards and norms. However safety and unexpected risks could arise in situations like following:

- *Hot water pellet boiler “ERATO Pelletherm 25 automatic” is operating incorrectly;*
- *The unit is installed by unauthorized/unqualified personal;*
- *The safety instructions, described in this manual are not followed and fulfilled;*

## Unexpected risks :

The unit is designed and produced according to the requirements of the operating EU safety norms. However, in spite of that possible risks are considered as a result of the operating process of the boiler, it is possible to arise risks as follows :

- ***Cauterization risks***, caused by high temperatures, as a result of the combustion process in the combustion chamber and/or direct access to the front door of the combustion chamber, at manual cleaning processes of the surfaces of the burner and/or combustion chamber, or ash residue cleaning, accumulated in the ash tray or any unburned fuel material, smoldering in the ash tray;
- ***Electrical shock risks*** at indirect contact. The boiler is connected to the power circuit and its operating modules are separated in specialized electric control box, equipped with required protective and short-circuit preventive devices. It is obligatory to perform boiler ground connection by authorized personal/technician.
- ***Fingers injuring risks*** at opening/closing the doors/caps of the boiler at maintenance and cleaning process of the unit. It is recommended to use appropriate individual resources for self-protection;
- ***Suffocation risks*** due to flue gas emissions in the boiler's room, in case when the chimney draught is insufficient, in case that the convective part of the boiler is clogged, or in case that the flue gas tract is not fully tightened and gas leaks are possible;

## 5.8. Operation faults and their repairing

No	Operation fault	Cause	Method for repairing
1.	Low temperatures in the heat supplied rooms	Insufficient heat capacity	Adjustment of operating parameters is required – <i>this should be performed by authorized technician</i>
		Low set-point temperature of the boiler's operating thermostat	It is necessary to increase the set-point of the boiler's operating thermostat (up to 90°C)
		Low set-point temperature of the remote room thermostat (if connected)	It is necessary to increase the set-point of the room thermostat
2.	High temperatures in the heat supplied rooms	High set-point temperature of the boiler's operating thermostat	It is necessary to decrease the set-point of the boiler's operating thermostat (it is recommended to keep it above 60°C)
		High set-point temperature of the remote room thermostat (if connected)	It is necessary to decrease the set-point of the room thermostat
3.	The boiler is active, but no combustion process	"Operate" command is not present	It is necessary to check the status of the operation signal of any of the following : room thermostat, "START" switch, boiler's operating thermostat
4.	Difficult fuel ignition	Low quality fuel	It is necessary to replace the fuel, most probably due to its high moisture content, which could above the required value for nominal operation of the boiler
5.	Boiler's emergency overheating	Absence of demand for boiler operation or incorrect adjustment of the parameters of the boiler or poor operation of the	It is necessary to check the correct operation process of the heating installation and eventually appropriate adjustment of the operating parameters of the boiler and/or control valves of the installation – <i>this should be performed by authorized</i>

		heating installation	<i>technician</i> . After the boiler is cooled down to ambient temperature and the reason for boiler overheating is serviced out, the protective cap of the emergency overheating thermostat should be unscrewed, its rod should be pressed until the thermostat is reset and it's cap should be screwed back. The main "POWER" switch is turned OFF and back ON afterwards and the boiler is thus restarted.
6.	No fuel ignition	Absence of fuel in the hopper	The fuel hopper should be charged.
		Absence of fuel in the burner	It is possible to manually restart the operation process of the boiler. This way the ignition process could be elongated. If this approach results in stable ignition, then it is necessary to increase the value of the initial fuel mass - <i>parameter T1</i> , <i>the adjustment should be performed by authorized technician</i> ;
		Fuel is present in the burner, but it's not ignited or it is fully incinerated and the combustion process has extinguished, i.e. not present;	In case that the hot air gun is out of order or not operating, then it should be replaced with appropriate working one. In case that the hot air gun is working, then it is necessary to increase the time for ignition of the initial mass of the fuel - <i>parameter T2</i> , <i>the adjustment should be performed by authorized technician</i> ;
		Abnormal operation or malfunctioning of the flue gas thermostat	The flue gas thermostat should be adjusted or replaced in case it is out of order
7.	The flame looks "opaque" and smoke is	Low quality pellets	Fuel replacement is recommended, most probably the moisture content is higher than required;

	observed at the exit of the chimney	Inappropriate operating parameters adjustment	It is necessary to perform adjustment of the operating parameters of the unit and achieve efficient combustion process - <i>the adjustment should be performed by authorized technician;</i>
8.	Presence of unburned fuel in the ash tray	Ineffective fuel combustion process	It is necessary to perform adjustment of the operating parameters and the air flow rate – <i>the adjustment should be performed by authorized technician;</i>
9.	Alarm – absence of ash cleaning	A problem in ash cleaning module	It is necessary to contact the service company and help of a authorized technician is required;
10.	High temperature of the flue gases (if flue gas thermometer is mounted)	The heat exchanging surfaces of the boiler are deposited with ash, presenting heat resistive layer, thus decreasing the heat exchanging intensity	It is necessary to clean thoroughly the heat exchanger surfaces of the boiler;
11.	Water vapor condensates on the surfaces of the combustion chamber	Low temperature of the inlet water flow	It is necessary to perform adjustment of set-point temperature, which controls the circulating pump of the heating system. It is recommended to adjust the thermostat set-point to minimum of 65°C;
12.	Flue gases are emitted out in the boiler's room after certain period of exploitation	The flue gas fan is clogged or even blocked by fly ash deposits	It is necessary to clean thoroughly the flue gas fan and its casing;
13.	Other failures, not described above		It is necessary to consult authorized technician and eventually service maintenance should be performed

**Table 7.** Description of operation faults of the boiler, causes and methods for repairing.



### **5.9. Hot water boiler warranty form completion.**

**The applied WARRANTY FORM should be completed, by filling the required information in the appropriate fields. The assigned field for signatures and stamp should be completed as well in order to VALIDATE the WARRANTY FORM of the unit.**

### **5.10. Actions, after the unit is not in exploitation anymore.**

After the lifetime period of the unit has been completed, then it should be treated properly in order to preserve environment contamination. The unit should be dismantled and disassembled by environmentally safe methods. This requirement is most commonly completed by appropriate components recycling, considering separate waste disposal and utilization methods.

## QUALITY CERTIFICATE

<b>Product</b>	Hot water pellet boiler “ERATO Pelletherm 25 automatic”
<b>Serial number</b>	
<b>Date of production</b>	
<b>Operation test check</b>	
<b>Technical control</b>	

## **“ERATO Product” LTD - Haskovo**

### **WARRANTY FORM**

<b>Product:</b>	<b>Hot water pellet boiler “ERATO Pelletherm 25 automatic”</b>
<b>Serial number</b>	
<b>Date of purchase</b>	
<b>Warranty period</b>	
<b>Vendor company</b>	
<b>Buyer</b>	(signature)
<b>Seller</b>	(signature)
<b>Initial operation date</b>	(date)
<b>Service company/technician</b>	(signature and stamp)

## **WARRANTY CONDITIONS**

**The producer guarantees correct and reliable operation of the unit ONLY when installation and maintenance requirements are completed.**

The warranty period of the boiler starts from date, when the warranty form is filled and stamped by the authorized organization.

**THE WARRANTY OF THE UNIT IS NOT VALID in case one of the following is fulfilled:**

- Unit damages, caused by incorrect handling, transport and/or loading/unloading, which are not organized by the producer;
- Failures, caused by natural disasters (Earth quakes, fires, floods, etc.);
- Unsatisfied installation, maintenance and service requirements, which are described in this manual and its annex;
- Repairing of any failure of the unit, performed by unauthorized technicians or the end user;
- Any changes in the design of the boiler;
- Incorrect heating system design;
- Failures, caused by factors, for which the producer could not be blamed and/or has no control over them;
- Any malfunctions or damages, which are not caused by the operation of the boiler itself, but result in unit damages and its functionality;

Every warranty service operation should be noticed in its warranty service procedures list.

The warranty period of the unit is interrupted by the period, during which the unit is warranty serviced by authorized technicians (the period between failure notification and its repairing).

The warranty period of the unit is **24** months.

***The warranty of the unit is valid when the original invoice document and the original warranty form are presented only.***

## WARRANTY SERVICE PROCEDURES LIST

<b>Entry date of unit in the service company</b>	<b>Description of the failure</b>	<b>Date of delivery back to the end user</b>	<b>Signature of the technician, which repaired the unit</b>

# CONFORMITY DECLARATION

**We, “ERATO Product” Ltd  
bul. “Saedinenie” 67  
6300, Haskovo, Bulgaria**

declare our own responsibility that the unit:

*hot water pellet boiler “ERATO Pelletherm 25 automatic”*

for which the current DECLARATION states, is in compliance and conformity with all requirements of standards or other normative documents,

according to :

EN 303-5 – “*Heating boilers for solid fuels, hand and automatically fired, nominal heat output of up to 300kW – Terminology, requirements, testing and marking*”.

Generated in Haskovo

Date : 10.12.2008

Executive director

“ERATO Product” Ltd

eng. D.Panayotov